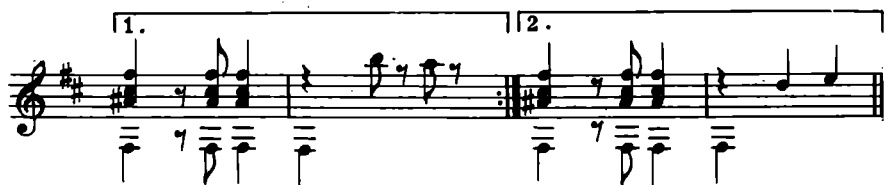
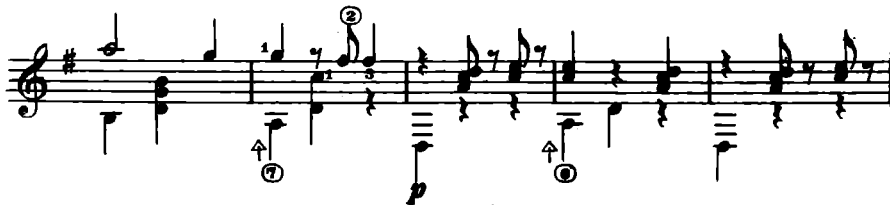
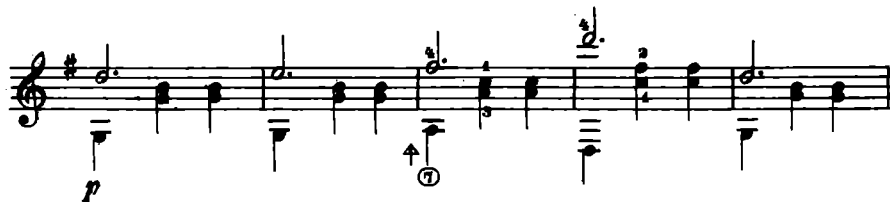
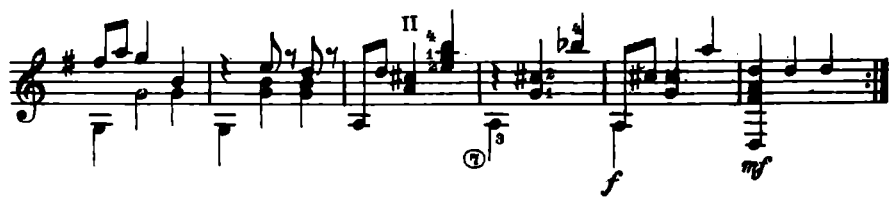


ВАЛЬС „МИЛАЯ“

Э. ВАЛЬДТЕЙФЕЛЬ

Musical score for the waltz "Milaia" by E. Waldteufel. The score is written in treble clef with a key signature of two sharps (F# and C#) and a 3/4 time signature. It consists of six staves of music. The first staff begins with a piano (*p*) dynamic marking. The score includes various musical notations such as notes, rests, slurs, and fingerings. There are two first endings (marked "1.") and one second ending (marked "2."). The piece concludes with a final piano (*p*) dynamic marking.





cresc.

1. 2.

dim. *p*

Играть с начала до слова „Конец“